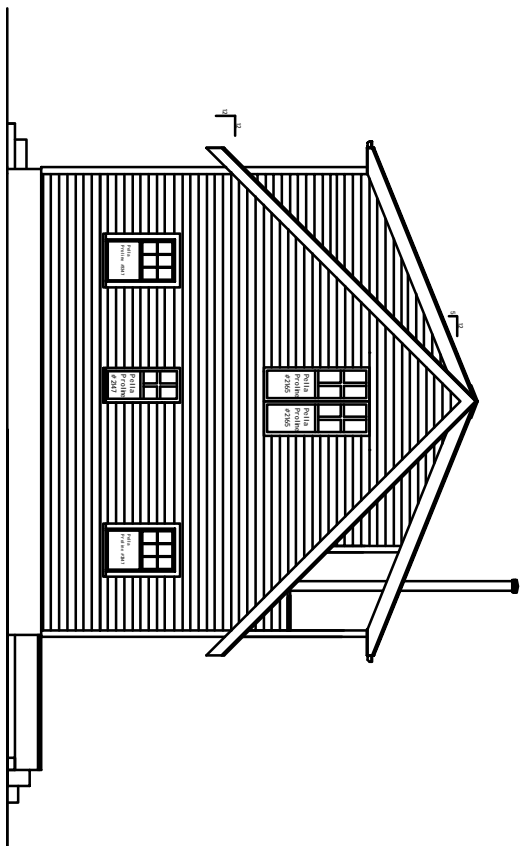
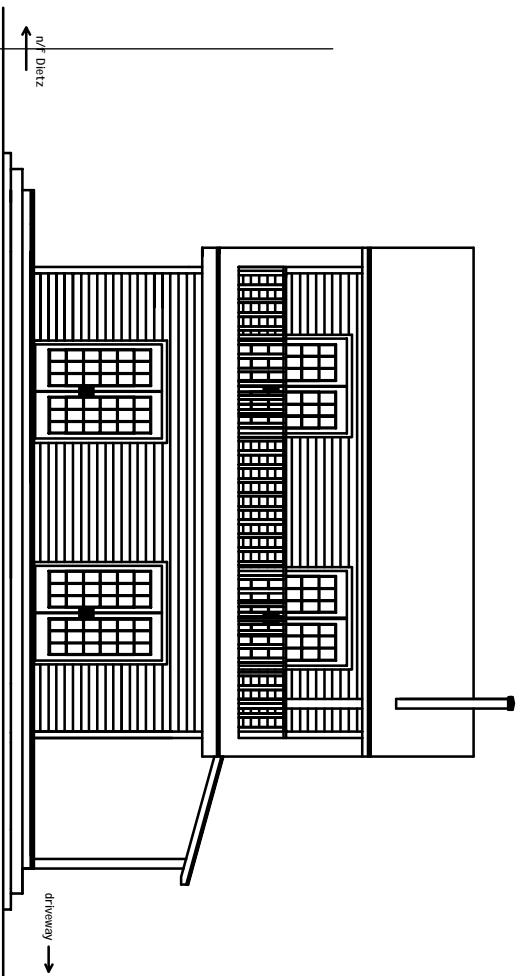


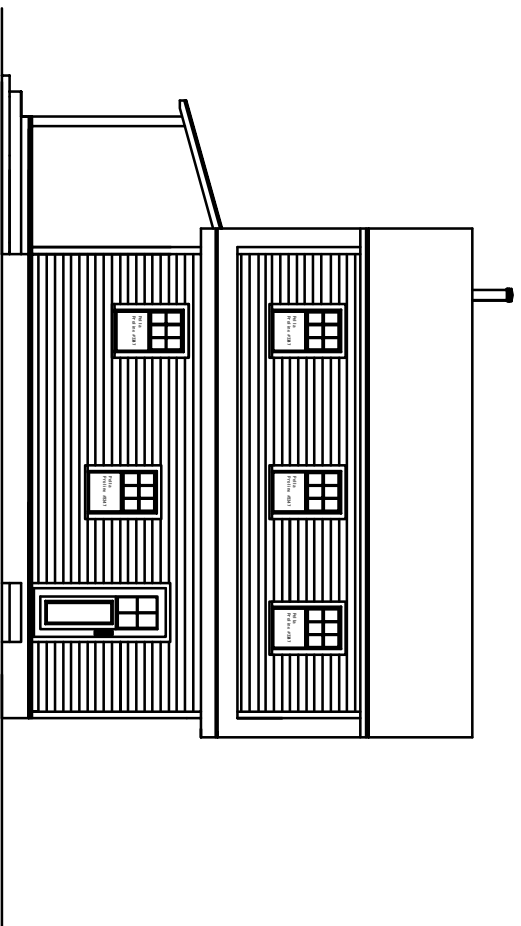
East Elevation - exterior



West Elevation - exterior



South Elevation - exterior

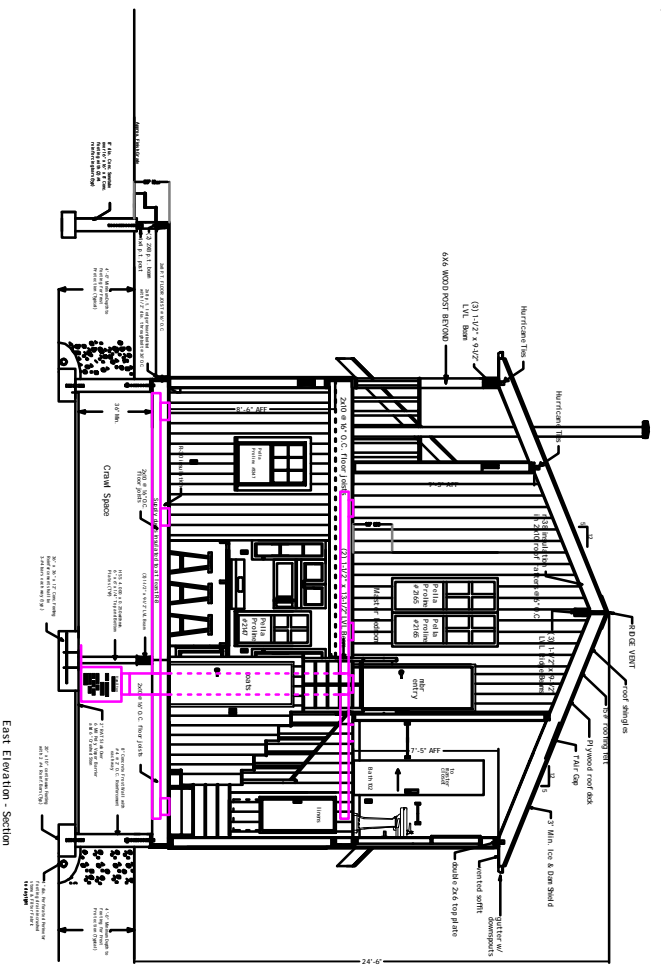


North Elevation - exterior

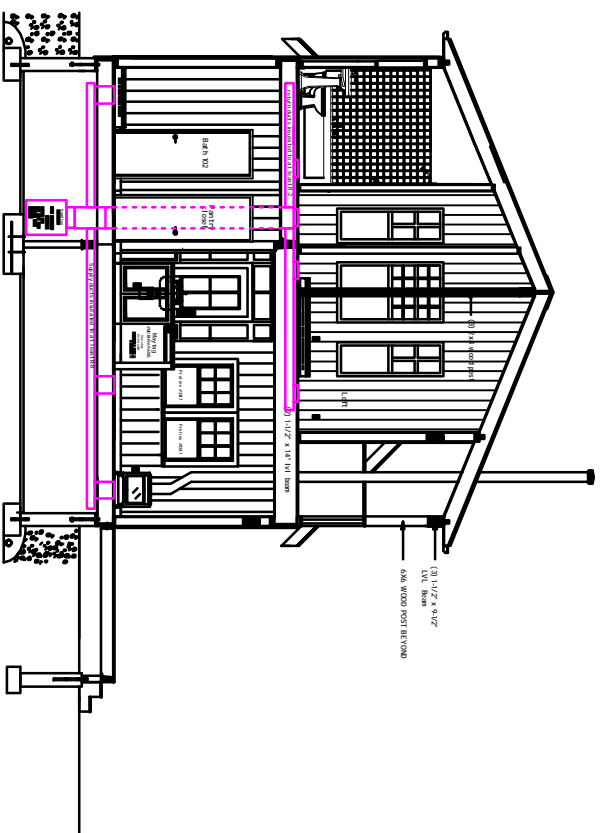
Info@aaronbolimanandcompany.com

166 Hommelville Road, Saugerties, NY 12477
 Sept 5, 2011 (c) 2011 AB&C, Inc.
 All rights reserved.
 917 843 3008

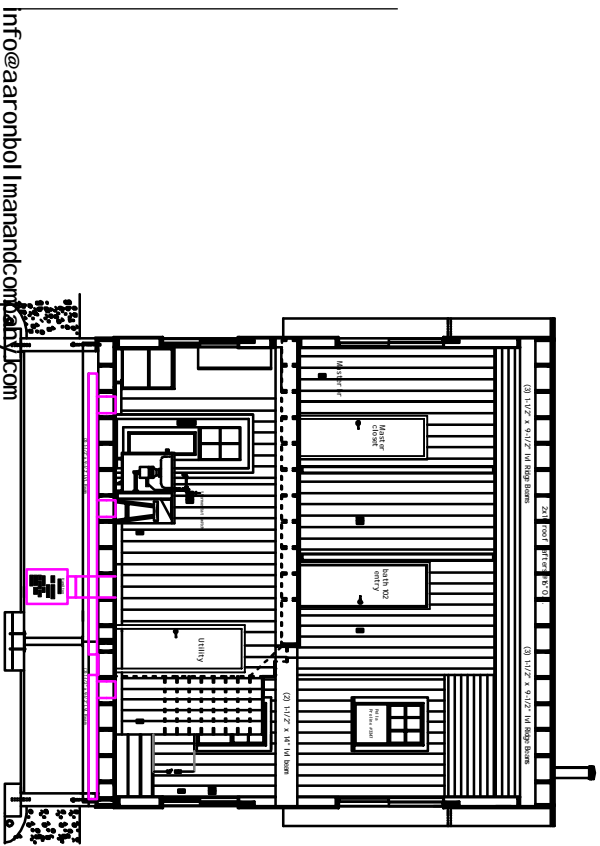
166 Hommelville 1.01



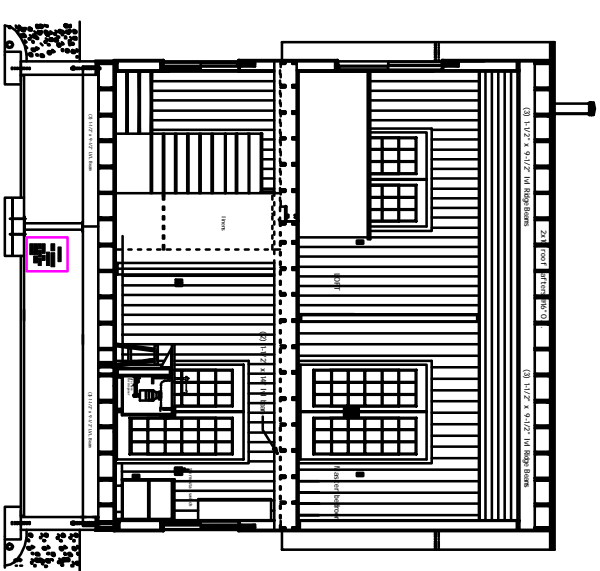
East Elevation - Section



West Elevation - Section



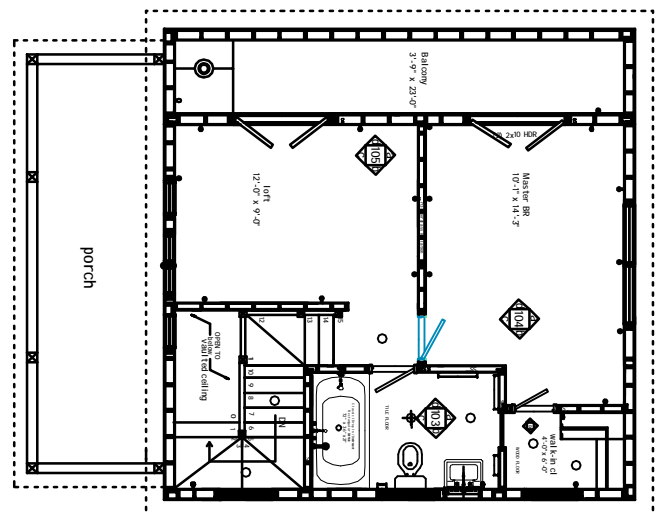
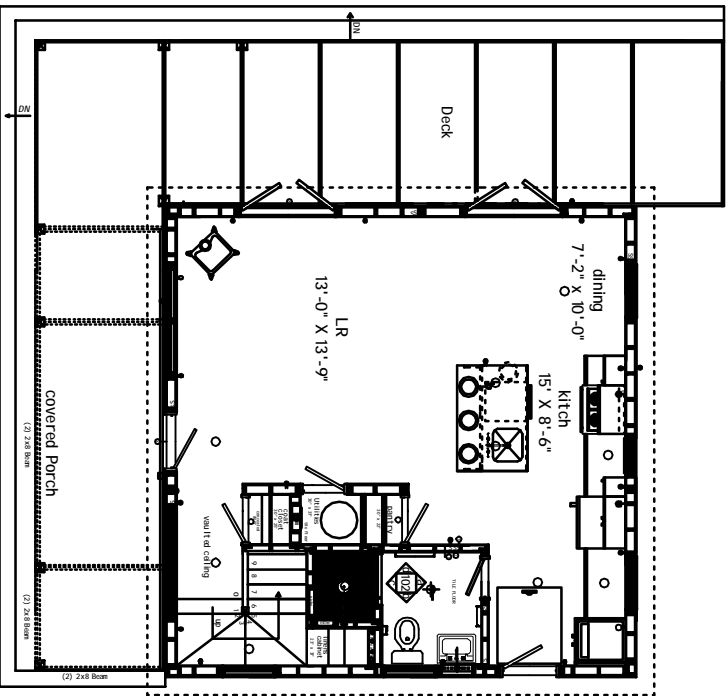
South Elevation - Section



North Elevation - Section

166 Hommelville Road, Saugerties, NY 12477
 Sept 5, 2011 (c) 2011 AB&C, Inc.
 All rights reserved.
 917 843 3008

166 Hommelville 1.03



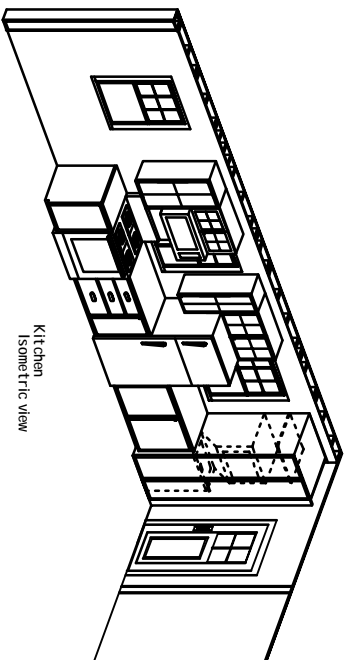
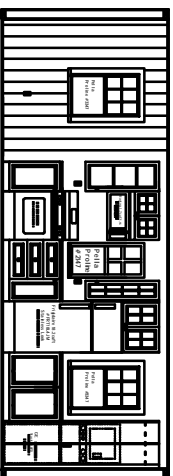
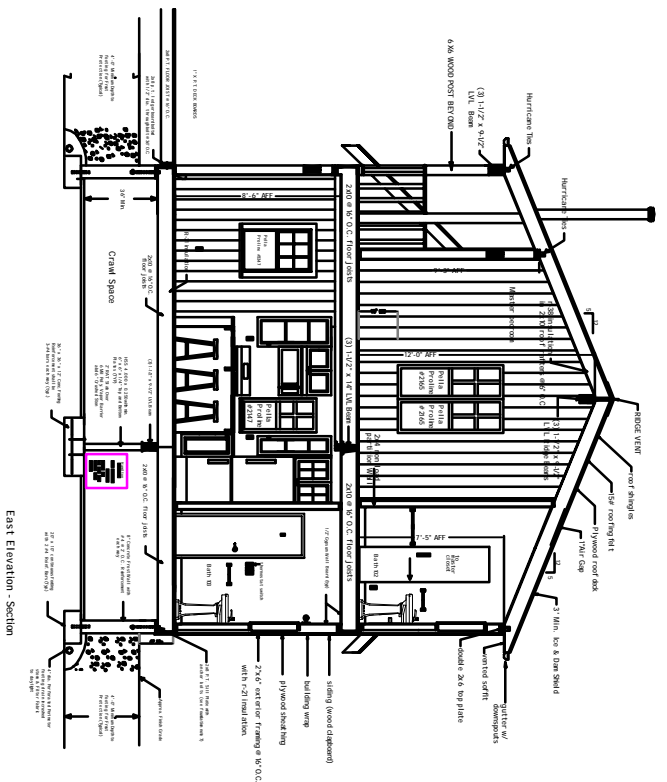
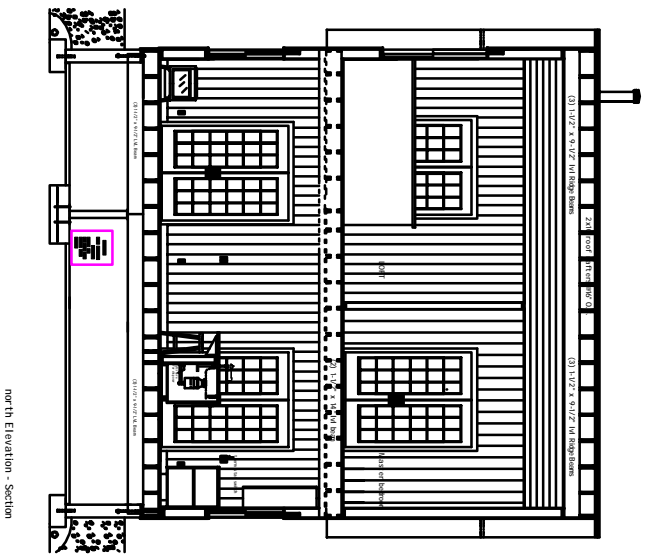
- duplex receptacle outlet
- ground fault circuit interrupter outlet
- switch
- light with pull switch
- recessed light fixture
- ceiling-mounted light fixture
- Thermostat
- floor-mounted receptacle outlet
- Exit wall light
- door bell
- 2x8 beam

info@aaronbolimanandcompany.com

Sept 5, 2011 (c) 2011 AB&C, Inc.
 All rights reserved.
 917 843 3008

Floor Plans

166 Hommelville 1.04b



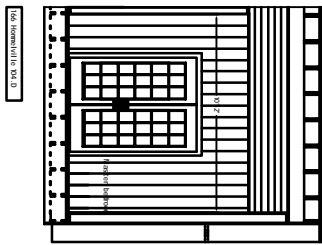
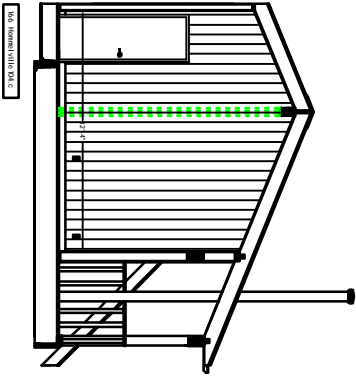
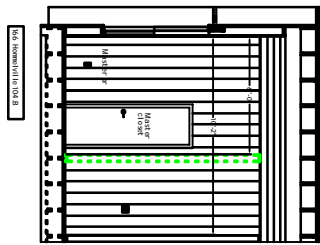
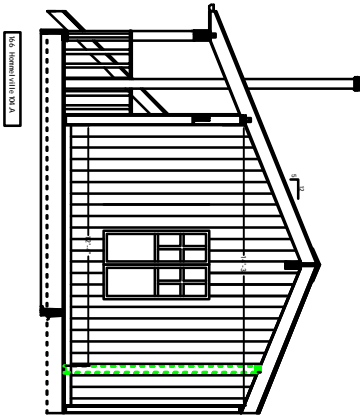
Info@aaronbolimanandcompany.com

Sept 5, 2011 (c) 2011 AB&C, Inc.

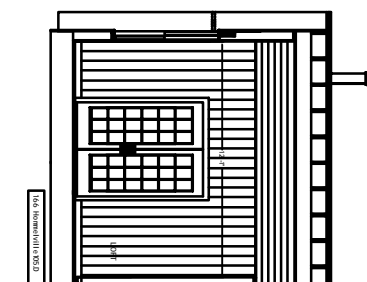
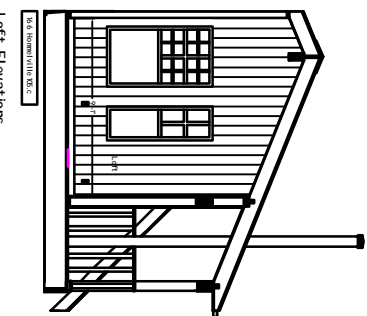
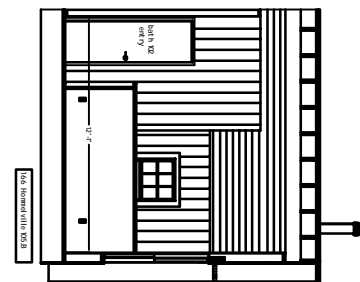
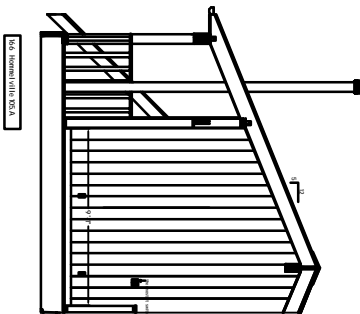
All rights reserved.

917 843 3008

166 Hommelville 1.05



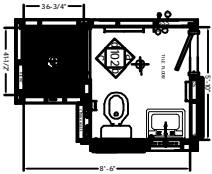
Master Bedroom Elevations



Loft Elevations

Info@aaronbolimanandcompany.com

Sept 5, 2011 (c) 2011 AB&C, Inc.
 All rights reserved.
 917 843 3008



**bathroom
#102 elevations**

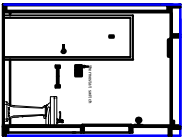
Sept 2, 2011 © 2011 AB&C, Inc.

All rights reserved.

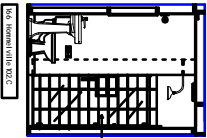
Info@aaronbol.com

166 Hommelville 1.07

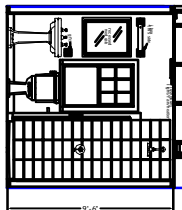
BATH #102 Finish schedule
 1. Paint
 2. Drywall
 3. Ceiling
 4. Electrical
 5. Plumbing
 6. Mechanical
 7. Windows
 8. Doors
 9. Trim
 10. Tile
 11. Bath
 12. Vanity
 13. Toilet
 14. Mirror
 15. Light
 16. Exhaust fan
 17. Final clean



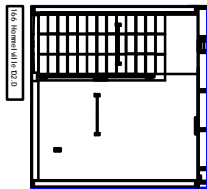
104 Hommelville 102.A



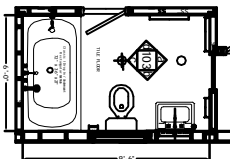
104 Hommelville 102.C



104 Hommelville 102.B



104 Hommelville 102.D



**bathroom
#103 elevations**

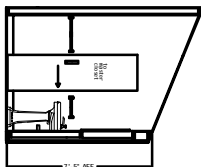
Sept 2, 2011 © 2011 AB&C, Inc.

All rights reserved.

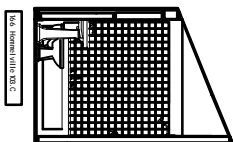
Info@aaronbol.com

166 Hommelville 1.07

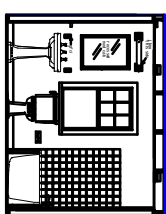
BATH #103 Finish schedule
 1. Paint
 2. Drywall
 3. Ceiling
 4. Electrical
 5. Plumbing
 6. Mechanical
 7. Windows
 8. Doors
 9. Trim
 10. Tile
 11. Bath
 12. Vanity
 13. Toilet
 14. Mirror
 15. Light
 16. Exhaust fan
 17. Final clean



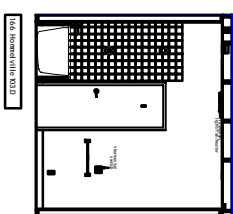
103 Hommelville 103.A



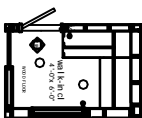
103 Hommelville 103.C



103 Hommelville 103.B



103 Hommelville 103.D



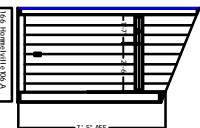
**master closet
elevations**

Sept 5, 2011 © 2011 AB&C, Inc.

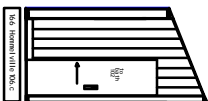
All rights reserved.

Info@aaronbol.com

166 Hommelville 1.07



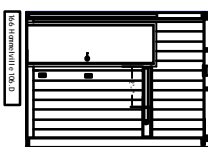
106 Hommelville 106.A



106 Hommelville 106.C

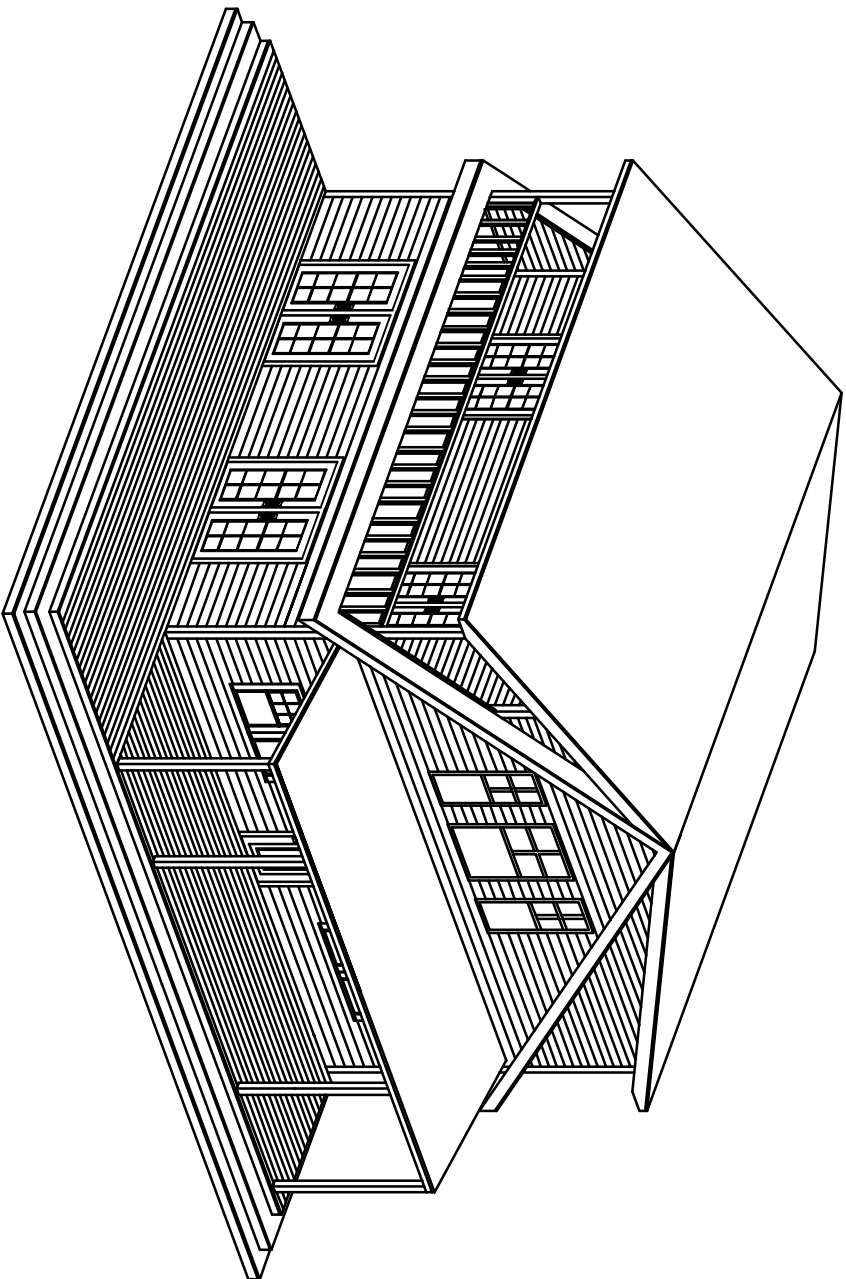


106 Hommelville 106.B



106 Hommelville 106.D

106 Hommelville 106.E

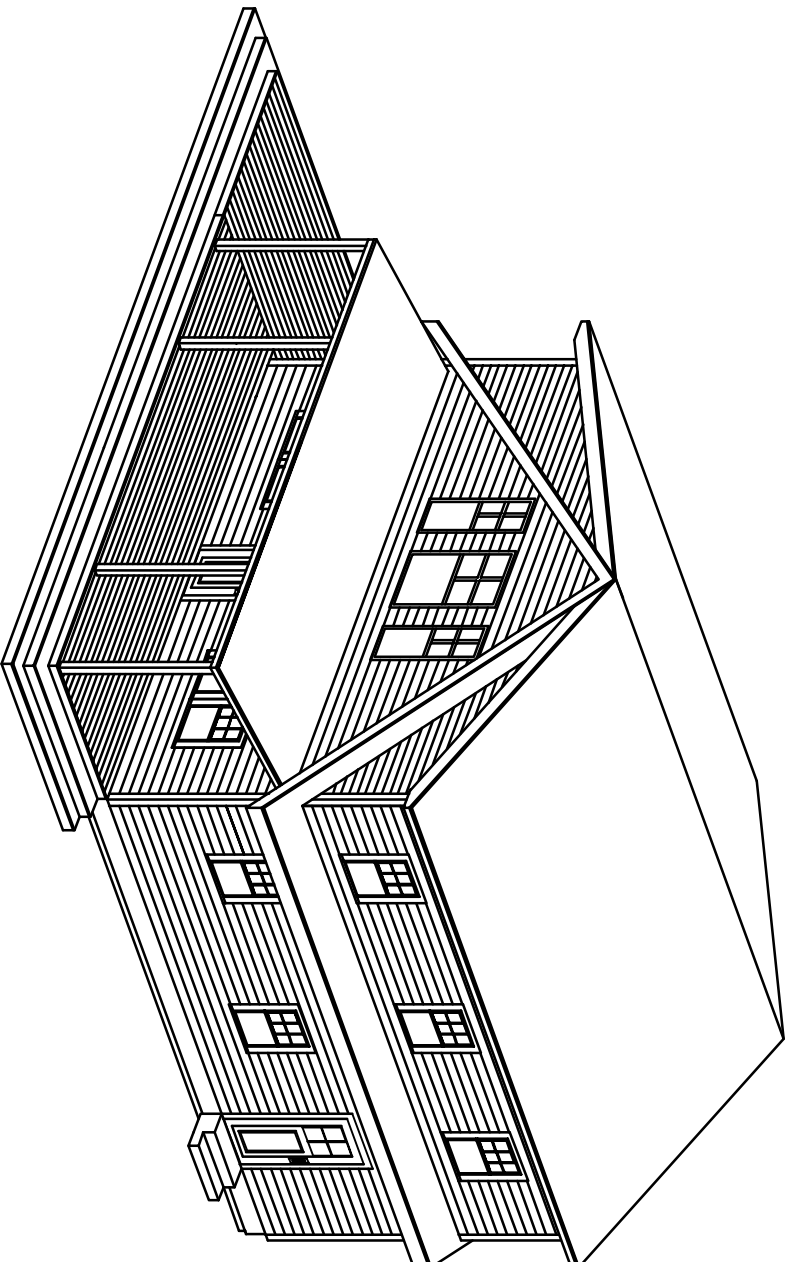


Info@aaronbolimanandcompany.com

Sept 5, 2011 (c) 2011 AB&C, Inc.
All rights reserved.
917 843 3008

Isometric
looking southeast

166 Hommelville 1.08



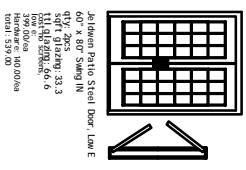
sheet 9

Isometric
looking northeast

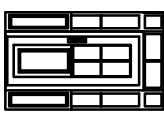
Info@aaronbolimanandcompany.com

Sept 5, 2011 (c) 2011 AB&C, Inc.
All rights reserved.
917 843 3008

166 Hommelville 1.09



Jelduwin Patio Steel Door, Low E
 60" x 80" Sliding IN
 QTY: 262
 11.14.2016
 Low E
 Hardware: 100.00/ea
 Total: 339.26



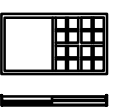
Entry Door, Arko design
 5'-0" x 7'-11"
 QTY: 103
 11.14.2016
 Low E



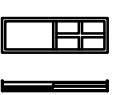
Entry Door, Arko design
 5'-0" x 7'-11"
 QTY: 103
 11.14.2016
 Low E



Passage Door, Arko design
 3'-0" x 7'-11"
 QTY: 103
 11.14.2016
 Low E



Polia Profile #2165
 8'-5"
 QTY: 103



Polia Profile #2165
 8'-5"
 QTY: 103



Polia Profile #2147
 8'-3"
 QTY: 103



Polia Profile #2147
 8'-3"
 QTY: 103



Polia Profile #2165
 8'-5"
 QTY: 103



Polia Profile #2165
 8'-5"
 QTY: 103



Polia Profile #2147
 8'-3"
 QTY: 103



Polia Profile #2147
 8'-3"
 QTY: 103

Polia Profile #2165
 8'-5"
 QTY: 103

Info@aaronbolimanandcompany.com

Sept 5, 2011 (c) 2011 AB&C, Inc.
 All rights reserved.
 917 843 3008

doors and windows

166 Hommelville 1.10