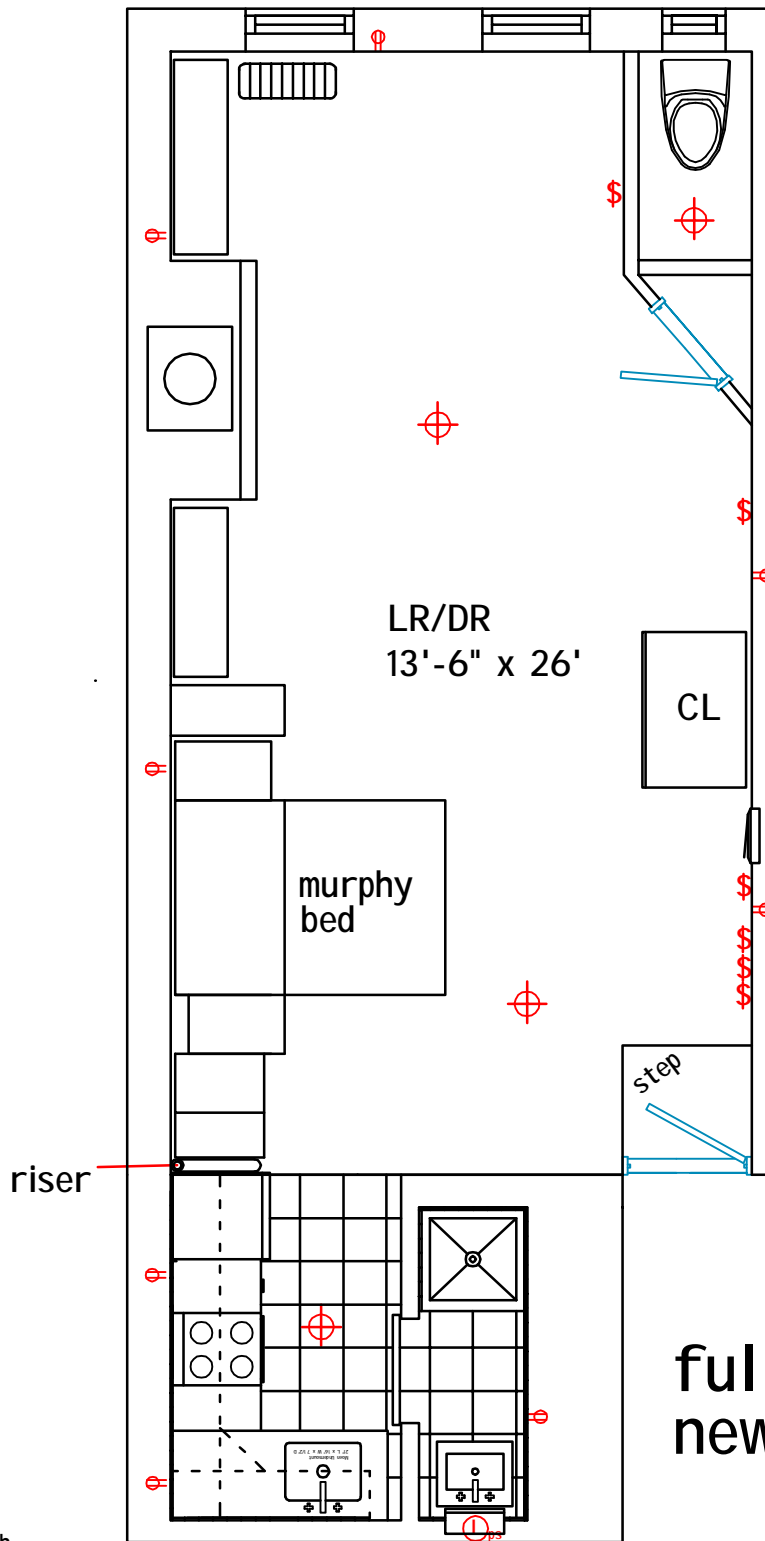


full plan showing existing kitchen

24 Cornelia Street, Apt 19 (fifth floor) Studio
 for client: Beth Greenwald
 Sept. 28th 2010 (c) 2010 Aaron Bollman & Company, Inc.
 All rights reserved.
 917 843 3008 info@aaronbollmanandcompany.com

24 Cornelia #19 1.01

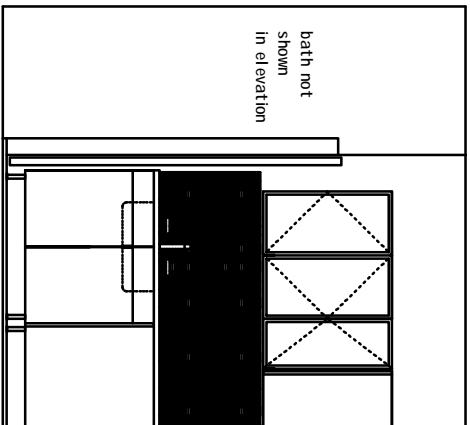


- ⊕ ceiling fixture
- ⊖ duplex receptacle
- S switch
- Ⓛ light with pull switch

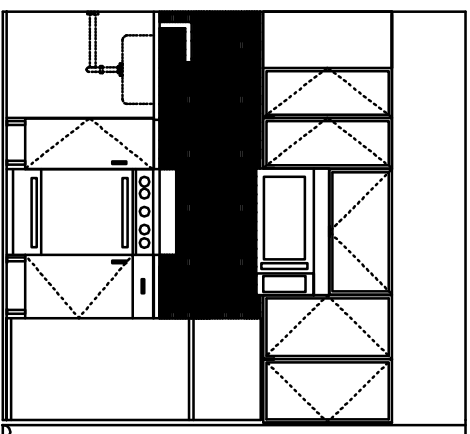
full plan showing
new kitchen

24 Cornelia Street, Apt 19 (fifth floor) Studio
 for client: Beth Greenwald
 Sept. 28th 2010 (c) 2010 Aaron Bollman & Company, Inc.
 All rights reserved.
 917 843 3008 info@aaronbollmanandcompany.com

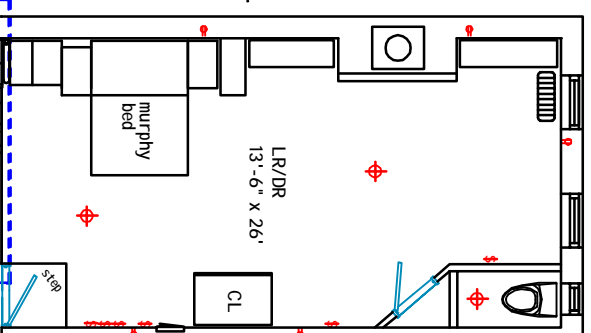
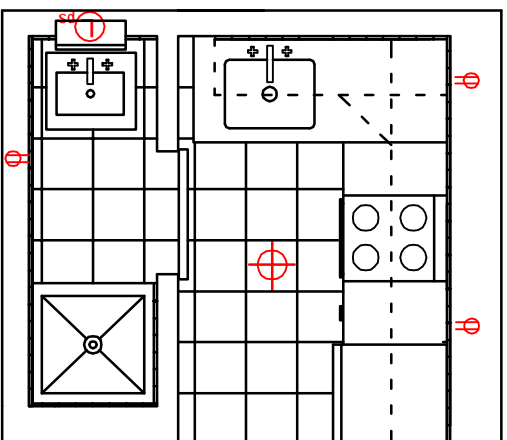
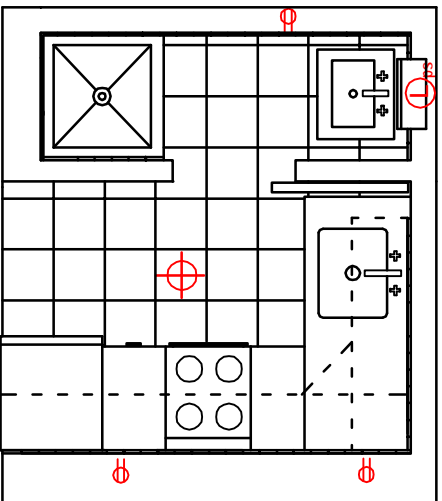
24 Cornelia #19 1.02



Kitchen: East Elevation



Kitchen: South Elevation

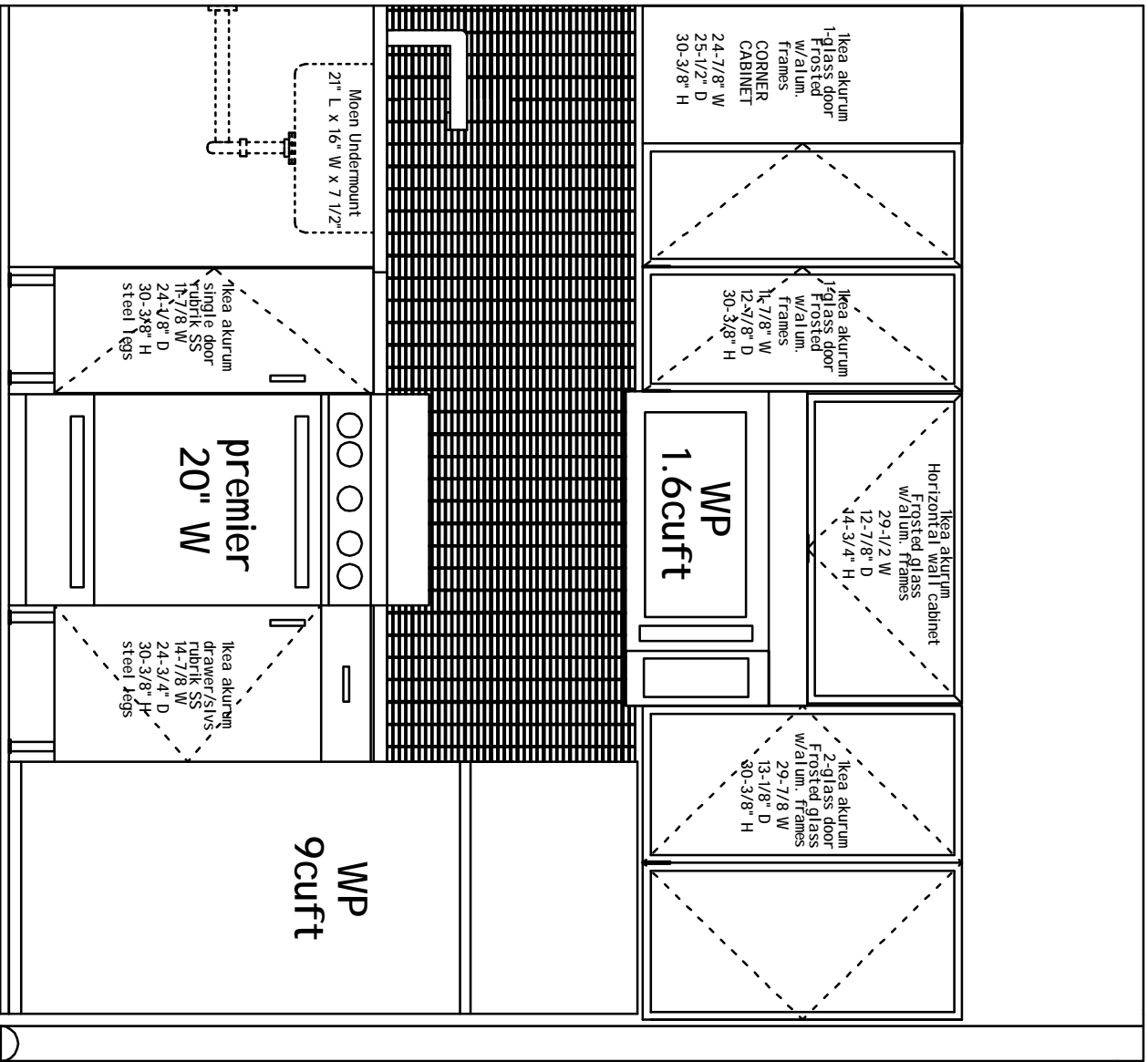


- ceiling fixture
- duplex recepticle
- S** switch
- light with pull switch

Info@aaronbollmanandcompany.com

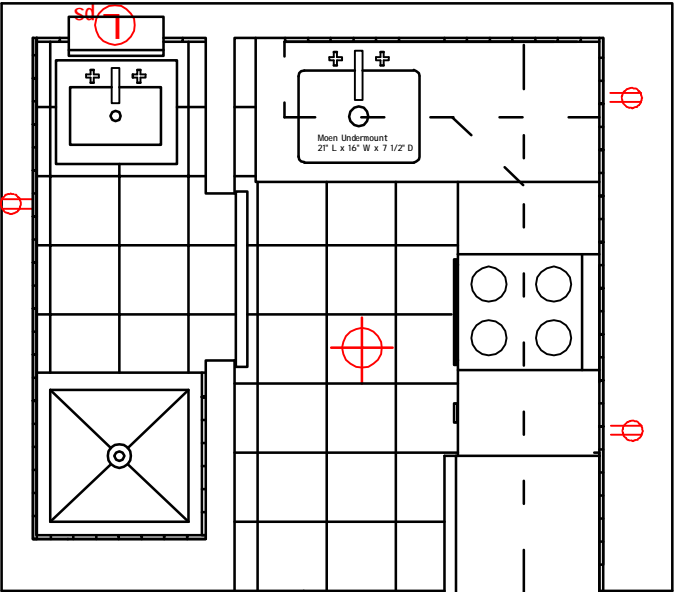
24 Cornelia Street, Apt 19 (Fifth Floor) Studio
 for client: Beth Greenwald
 Oct 1, 2010 (c) 2010 Aaron Bollman & Company, Inc. All rights reserved.
 917 843 3008

24 Cornelia #19 1.03



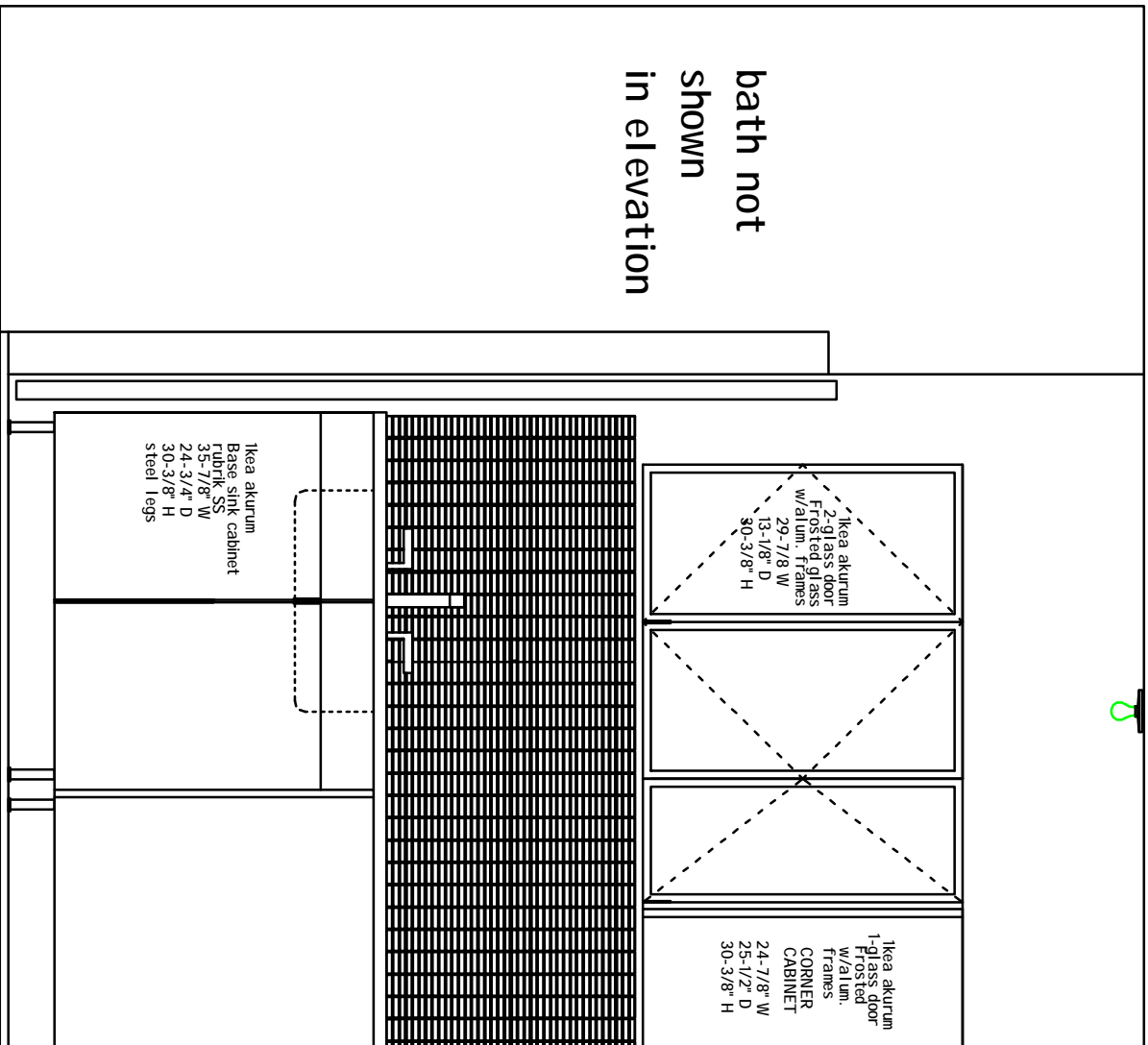
Info@aaronbolimanandcompany.com
Kitchen: South Elevation

24 Cornelia Street, Apt 19 (fifth floor) Studio
 for client: Beth Greenwald
 Sept. 28th 2010 (c) 2010 Aaron Bollman & Company, Inc.
 917 843 3008



24 Cornelia #19 1.04

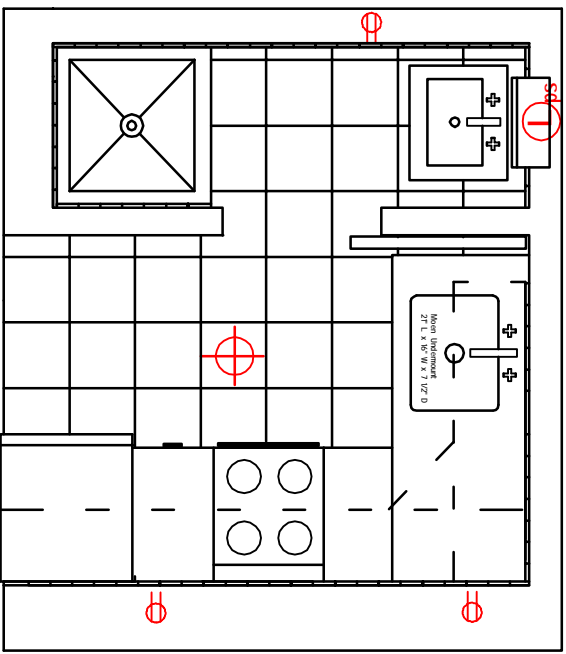
bath not shown in elevation



Kitchen: East Elevation

Info@aaronbollmanandcompany.com

24 Cornelia Street, Apt 19 (fifth floor) Studio
 for client: Beth Greenwald
 Sept. 28th 2010 (c) 2010 Aaron Bollman & Company, Inc.
 All rights reserved.
 917 843 3008



24 Cornelia #19 1.05